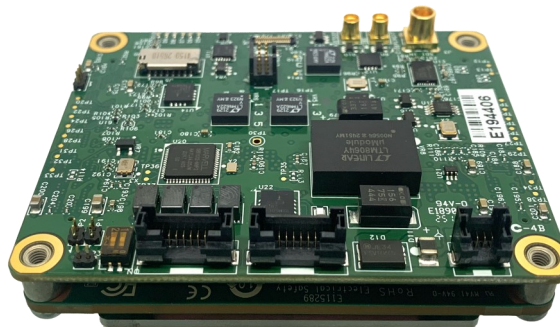


### FEATURES

- Real-time, high-quality, low-latency encoding for video-over-IP applications
- Standards-based, H.264 and H.265 algorithms
- Optional Ultra low-latency, visually lossless JPEG-XS
- Resolutions up to 4K
- Supports UHD/HD/SD-SDI and MIPI CSI-2 Formats
- Transmit video at rates as low as 64Kbps up to 1Gbps
- RTSP/RTP/UDP, TS/UDP, SMPTE-2110, SRT/RIST Protocols
- MISB-Compliant
- Fully configurable network interface
- AES Encryption
- GPS/IRIG/PTP/NTP Time Sync
- Serial and Ethernet Metadata
- Serial or Ethernet port configurable
- Compact, rugged module, including extended temperature (-40°C to +71°C) version



The Model VEC500 UHD/HD/SD Video Encoder Module provides a modular solution for camera and sensor manufacturers to add video streaming to their devices. The module is a network appliance designed to compress Ultra High Definition (UHD), High Definition (HD), and Standard Definition (SD) video (UHD/HD/SD-SDI, MIPI CSI-2) for transmission over IP networks. The unit converts cameras and sensors to Ethernet compatible devices for any remote monitoring application including security, surveillance, broadcast, and distance learning.

Utilizing industry-standard H.264/H.265, or low-latency JPEG-XS compression, along with flexible adjustments for video resolutions, compression parameters, and network settings, the VEC500 can be optimized to deliver high-quality video over any network. The unit is easily configured via the Ethernet or serial port, with support for metadata channel multiplexing. The VEC500 is compliant with off-the-shelf video players and most decoding hardware, including Delta's decoders.

This compact, rugged module is capable of operation in harsh environments. Extended temperature operation, SRT/RIST support, and AES encryption makes it ideal for military, law enforcement, and traffic monitoring applications.

### VIDEO INPUT

**Format** SDI (SMPTE)/MIPI CSI-2  
**Connector** MCX/Multi-pin Header

### VIDEO COMPRESSION

**Algorithms** H.264/H.265/JPEG-XS (Option)  
**Format** H.264: BP,MP,HP Level 5.1, 4:2:2, 8-Bit  
 H.265: MP,M10P Level 5.1, 4:2:2, 8/10-Bit  
 JPEG-XS: 4:2:2, 8/10-Bit  
**Resolutions** 2160p/1080p/720p/1080i/480i/576i  
**Frame Rate** 25/29.97/30/50/59.94/60  
**Scale/Crop** HH/HV/CIF/ROI

### STREAMING INTERFACE

**Ports** GbE  
**Protocol** MPEG-2 Transport Stream  
 RTSP/RTP  
 SRT/RIST  
**Data Rate** 64Kbps to 1Gbps  
**Configuration** DHCP or Static Address  
 Selectable Ports  
 Auto Sense Full/Half Duplex  
 Unicast/Multicast  
**Connector** 10-pin Header

### METADATA INTERFACE

**Format** SDI VANC/RS-232/Ethernet  
**Protocol** KLV/Clear  
**Connector** MCX (SDI)/10-pin Header

### CONTROL

**Format** Serial/Telnet/Web Browser  
**Protocol** Delta's 3-character mnemonics/HTML/https/  
 SSH/SNMPv3  
**Connector** 10-pin Header

### TIME INPUT/OVERLAY

**Protocol** GPS/IRIG-B (DC)/PTP/NTP  
**Connector** 10-pin Header

### ENCRYPTION

**Algorithm** AES-128/256

### ENVIRONMENTAL

**Temp (Op)** Commercial (12Gb): 0°C to +71°C  
 Industrial (10Gb): -40°C to +71°C  
**Temp (Storage)** -55°C to +85°C  
**Humidity** 5%-95% RH, non-condensing

### POWER

**Volts** +9-36VDC (12VDC Nominal)  
**Watts** 10W  
**Connector** 4-pin Header

### SIZE

**Dimensions** 3.03"W x 2.36"D x .84"H  
 77.0mm x 60.0mm x 21.3mm  
**Weight** 3.6oz (102g)

